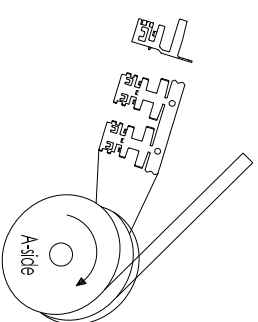
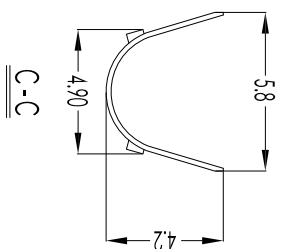
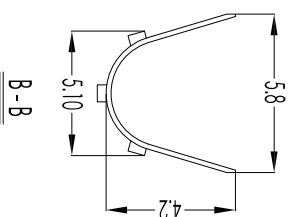
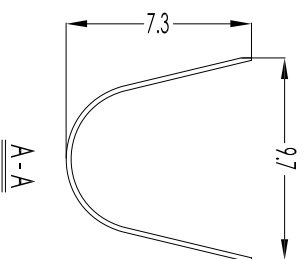


Recommended P.C.B Layout (Top Side)
[PCB Board Tolerance ±0.05]



成品物料方向，如图所示
端子头朝A面，PVC包脚向上

NOTES:

1. P.C.Board Hole: $\phi 3.2\text{mm}$
2. P.C.Board Thickness: 1.60mm .
3. Standard Packing: 2000pcs/Reel

Item	Parts Material	Specification	Qty	Note	P/N
①	terminal Material	Boss / Thickness: 0.20mm/1in - Plate/Applicable wire: AWG18/4C	✕		T-932052-03-M-0

Rev.	修正: Revisions
A.01	SR-3309485-2DA-T Tony 2013/07/15
B.02	变更料号 Tony 2022/07/06

- Tolerances -
Unless otherwise specified



东莞市盛瑞科技有限公司
Dongguan Shengrui Technology Co., Ltd.

机型 Model
客规 Customer P/N

盛瑞料号 Part No.
Environmental standard

RoHS
Third angle projection

核准 Approved: 07/06/22
审核 Checked: 07/06/22
安规 Safety

製圖 Drawn: Tong
頁碼 Page: 1/1

圖名 Description:
3.20mm P.C.Board Terminal

公差: ±0.25
X.XX: ±0.15
X.XXX: ±0.05
X°: ±2°

THIS DRAWING CONTAINS INFORMATION THAT IS PROPRIETARY TO SHENGRUI INCORPORATED AND SHOULD NOT BE USED WITHOUT WRITTEN PERMISSION.

單位 Unit: mm
比例 Scale

頁碼 Page

頁碼 Page

頁碼 Page

頁碼 Page

頁碼 Page

頁碼 Page