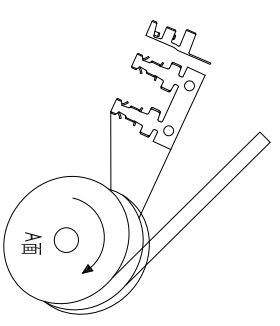
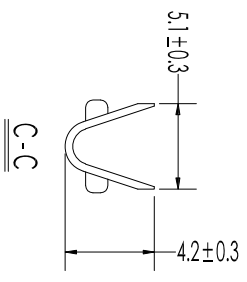
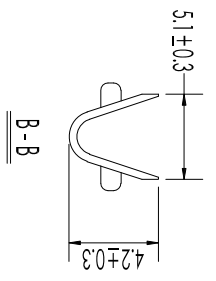
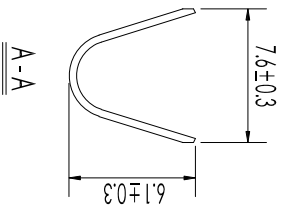


Recommended P.C.B. layout (Top Side)  
(PCB Board Tolerance ±0.05)



成品捲料方向，如圖所示  
端子头部朝A面，PVC包脚向上

- NOTES:
1. P.C.Board Hole:  $\phi 3.2\text{mm}$
  2. P.C.Board Thickness:  $1.60\text{mm}$ .
  3. Standard Packing: 2000pcs/Reel

Item	Parts Material	Specification	Qty	Note	P/N
①	terminal Material: Phosphor Bronze/Thickness: 0.20mm/Fin-Plate $\phi 0.85\text{mm}$ /Applicable wire: 12AWG-16AWG		8000 PCS		T-9320S1-03-M-0

Rev.	修正 Revisions
A.01	SF-D320P-2 Tony 2013/07/15
B.02	变更料号 Tony 2020/05/13

- Tolerances - Unless otherwise specified	
公差	公差
XX : ±0.20	±0.20
XXX : ±0.15	±0.15
XXXX : +0.10	±0.10
X° : ±2°	±2°

**SRCO** 东莞市盛瑞科技有限公司  
Dongguan Shengrui Technology Co., Ltd.  
TEL: 86-769-8216714/87988775 MAIL: src@qdsrco.com

機型 Model	客號 Customer P/N	盛瑞料號 Part No.	Environmental standard
-	-	T-9320S1-01-M-3	RoHS

核准 Approved	日期 Date	審核 Checked	日期 Date	安規 Safety	製圖 Draw	日期 Date	頁碼 Page
Tong	05/13/20	郑瑞	05/13/20		Tong	05/13/20	1/1

圖名 Description:  
3.20mm P.C.Board Terminal

