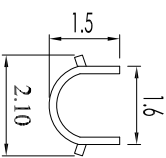
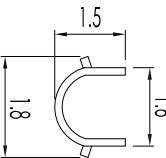


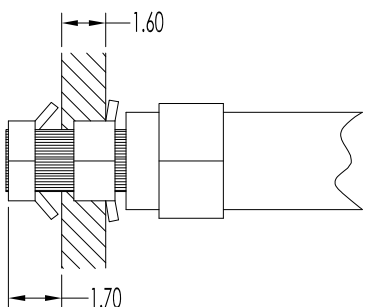
A-A



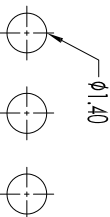
B-B



C-C



Recommended P.C.B Layout (top side)  
[PCB Board Tolerance ±0.05]



成品捲料方向，如图所示  
端子头朝入面，PVC包脚向上

- NOTES:
1. P.C.Board Hole:  $\phi 1.4\text{mm}$
  2. P.C.Board Thickness:  $1.60\text{mm}$ .
  3. Standard Packing: 10000pcs/Reel

Item	Parts Material	Specification	Qty	Note	P/N
①	terminal Material Phosphor Bronze/Thickness:0.20mm/Fin-Profile 60-80u"/Applicable wire 26AWG-22AWG		10000 PCS		T-P140S1-03-M-0

**SRCO** 东莞市盛瑞科技有限公司  
Dongguan Shengrui Technology Co., Ltd.

TEL: 86-769-8216714/87988875 MAIL: srco@dsrco.com

THIS DRAWING CONTAINS INFORMATION THAT IS PROPRIETARY TO SHENGRUI INCORPORATED AND SHOULD NOT BE USED WITHOUT WRITTEN PERMISSION.

修正 Revisions

Rev.	修正 Revisions	Tony	Date
A.01	SR-33093FS-2M-1	Tony	2013/07/15
B.02	变更料号	Tony	2020/05/13

- Tolerances -  
Unless otherwise specified

公差	公差	公差
XX : ±0.20	XX : ±0.20	XX : ±0.20
XXX : ±0.15	XXX : ±0.15	XXX : ±0.15
X : ±0.05	X : ±0.05	X : ±0.05
X° : ±2°	X° : ±2°	X° : ±2°

機型 Model

各號 Customer P/N

盛瑞料號 Part No.

Environmental standard

單位 Unit:mm 比例 Scale

Specification

RoHS

Third angle projection

頁碼 Page

1/1

核准 Approved

日期 Date

製圖 Drawn

日期 Date

圖名 Description:

1.40mm P.C.Board Terminal