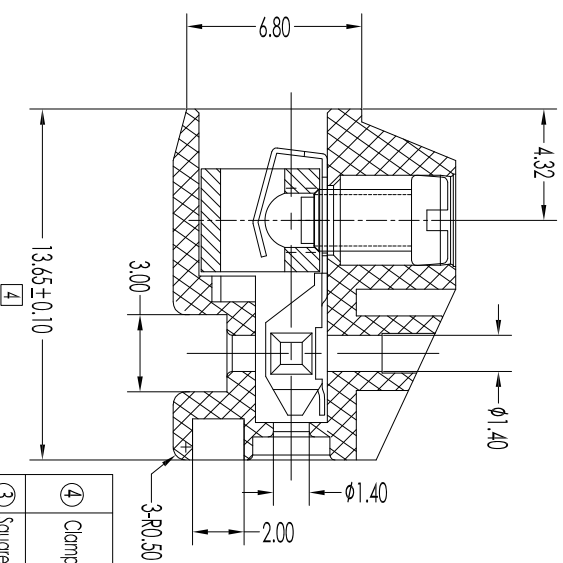
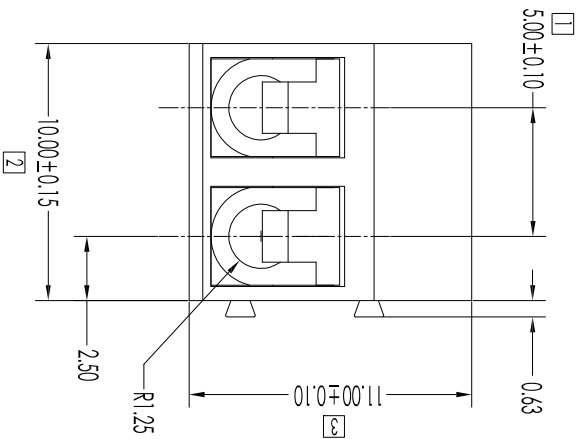


Used with "T-5350G-12" pairs of plugs

- Technical requirements:**
1. The copper buckle spring should not have any detachment, and the screws should be loosened in place.
 2. The screw head cannot be scratched, and the screw teeth function normally. The stripped cannot oxidize or deform.
 3. The printing and color on the surface of the plastic should be correct, and there should be no defects such as shrinkage, water marks, fusion marks, or burrs.

Quality control project:

1. Size control: Refer to the "□" mark.
2. Functional testing.



Performance Parameters			
Operating temperature	-33°C - 105°C	-33°C - 105°C	-33°C - 105°C
Wire Stripping Length	5 - 6mm	5 - 6mm	5 - 6mm
Applicable Wires	20 - 14AWG	22 - 14AWG	20 - 14AWG
Withstanding Voltage	AC2500V/1Min	AC2500V/1Min	AC2500V/1Min
Insulation Resistance	DC500V 500MΩ	DC500V 500MΩ	DC500V 500MΩ
Technical Data	AC250V 10A	AC250V 10A	AC250V 10A
ITEM	CQC	UL	C8

Item	Parts Material	Specification	Qty	Note	P/N
④	Clamp spring	Phosphor bronze/fin-plating	1 Pcs	T-5350G-11-502-CS	
②	Wire clamp unit screw	Phosphor bronze/fin-plating	1 Pcs	T-5350G-11-501-CS	
③	Square buckle	Copper alloy/Nicke-plating	1 Pcs	T-5350G-11-500-SB	
①	Insulator	Screw alloy steel C1018/Plating: Trivalent Blue Zinc/M2.5xP0.45	1 Pcs	T-5350G-11-500-SW	
		Nylon 66 J194V-0	N Pcs	T-5350G-11-500-HS	

Rev.	Revisions	- Tolerances - Unless otherwise specified 公差	
A.01	350-GT-FNP Tony 2016/07/15	XX : ±0.25	XX : ±0.20
B.01	变更料号 Tony 2020/07/21	XXX : ±0.15	XXX : ±0.10
		X : +2°	X : +2°

东莞市盛瑞科技有限公司
Dongguan Shengrui Technology Co., Ltd.
TEL: 86-769-8216714/87988775 MAIL: srco@dsrco.com

THIS DRAWING CONTAINS INFORMATION THAT IS PROPRIETARY TO SHENGRUI INCORPORATED AND SHOULD NOT BE USED WITHOUT WRITTEN PERMISSION.

機型 Model	客號 Customer P/N	審核 Approved/ian	圖名 Description
盛瑞料號 Part No.	T-5350G-11-500-2P-X	審核 Checked 郑昊 07/21/20	Pitch 5.00mm Female Style P.C.B Connector
Environmental standard	RoHS	安規 Safety	
單位 Unit:mm	比例 Scale	製圖 Drawn	
	Third angle projection	Tong 07/21/20	
		頁碼 Page	
		1/1	