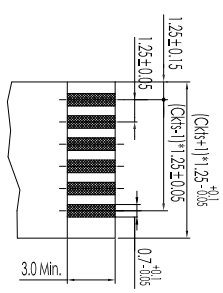
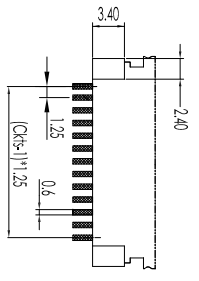
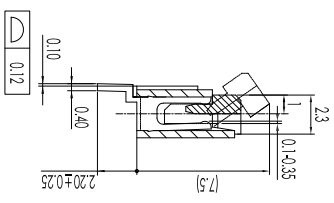
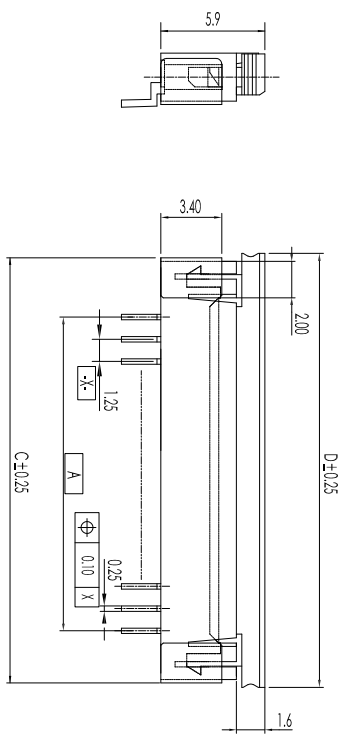
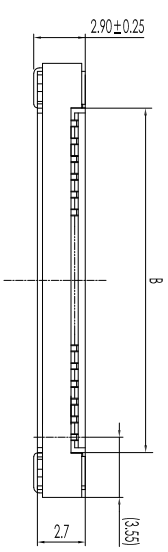
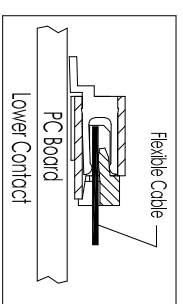
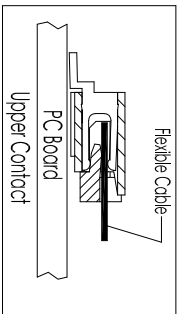


CKTS	DM/A	DM/B	DM/C	DM/D
03	2.50	5.25	9.85	10.25
04	3.75	6.50	11.10	11.50
05	5.00	7.75	12.35	12.75
06	6.25	9.00	13.60	14.00
07	7.50	10.25	14.85	15.25
08	8.75	11.50	16.10	16.50
09	10.00	12.75	17.35	17.75
10	11.25	14.00	18.60	19.00
11	12.50	15.25	19.85	20.25
12	13.75	16.50	21.10	21.50
13	15.00	17.75	22.35	22.75
14	16.25	19.00	23.60	24.00
15	17.50	20.25	24.85	25.25
16	18.75	21.50	26.10	26.50
17	20.00	22.75	27.35	27.75
18	21.25	24.00	28.60	29.00
19	22.50	25.25	29.85	30.25
20	23.75	26.50	31.10	31.50
21	25.00	27.75	32.35	32.75
22	26.25	29.00	33.60	34.00
23	27.50	30.25	34.85	35.25
24	28.75	31.50	36.10	36.50
25	30.00	32.75	37.35	37.75
26	31.25	34.00	38.60	39.00
27	32.50	35.25	39.85	40.25
28	33.75	36.50	41.10	41.50
29	35.00	37.75	42.35	42.75
30	36.25	39.00	43.60	44.00



Recommended P.C.B. Layout

FFC/PPC Dimension  
Thickness 0.3-0.05 mm



④	Fitting Nail	Boss /Tin over nickel	2 PCS	A125FZ-TTEG-202
③	Terminal	Phosphor Bronze / Tin over nickel	CKTS PCS	A125FZ-TTEG-201
②	Latch	LCPJU94-V0/Color: Nature	1 PCS	A125FZ-CIAT-102
①	Housing	LCPJU94-V0/Color: Nature	1 PCS	A125FZ-CHSG-101

Item	Parts Material	Specification	Qty	Note
------	----------------	---------------	-----	------

- NOTES:
- Current Rating: 0.5A AC/DC
  - Voltage Rating: 50V AC/DC
  - Temperature Range: -30°C to 85°C
  - Contact Resistance: 20mΩ Max.
  - After Environmental Testing: 20mΩ Max.
  - Insulation Resistance: 500MΩ min.
  - Clamping Force: 0.05Kg/Pin/Min.
- F - 125 F XX X - LP P T - W 6 Z - X
- ① F=FFC/PPC Connector
  - ② 125=Pitch 1.25mm
  - ③ F=F Type Series
  - ④ XX= No of Contacts
  - ⑤ B=Bottom Contact Type/I=Top Contact Type/R=Vertical Right Contact Type/V=Vertical Left Contact Type/S=Single Contact Type/D=Dual Contact/N=Indiscriminate
  - ⑥ PT=PTJ/66= NYLON 66/46= NYLON 46/6T= NYLON 6T/9T= NYLON 9T/1P=LCP/PP=PPS
  - ⑦ B=Brass/P=Phosphor Bronze/H=High conductivity copper/R=Red copper/C=Copper Alloy
  - ⑧ Surface Processing(0=None)/I=In Bright/G=Gold Flash Plating/N=Nickel Plating/=In Matte/2=3u" Gold/3=5u" Gold/4=6u" Gold/5=10u" Gold/6=15u" Gold/7=20u" Gold/8=30u" Gold/9=Silver Plating/H=Half of Gold Tin
  - ⑨ V=Vertical Dip type/R=Right Angle Dip type/L=Vertical SMT type/W=Right Angle SMT Type/S=Special P.C.B. Model
  - ⑩ Insulator Height: 1=0.90mm/2=1.00mm/3=1.20mm/4=1.50mm/5=2.00mm/6=2.70mm/7=3.00mm/8=5.00mm/N=Indiscriminate
  - ⑪ N=Non-ZIF Type/Z=ZIF Type
  - ⑫ Packaging: 1=PE bag/2=tube/3=Reel/4=Hot Tape&Reel/5=Reel+CAP/6=Reel+MW/cr/7=PC Tray/8=tube+CAP/9=tube+MW/cr

修正 Revisions

Rev.	SR-125-XX41XX	Tony 2019/05/16
A.01	变更料号	Tony 2020/07/21
A.02		

Unless otherwise specified

公差	公差
XX : ±0.25	0.20
XXX : ±0.20	0.20
XXXX : ±0.10	0.20
XX : ±5°	±4.90
X : ±5°	±3.0

THIS DRAWING CONTAINS INFORMATION THAT IS PROPRIETARY TO SHENGRIU INCORPORATED AND SHOULD NOT BE USED WITHOUT WRITTEN PERMISSION.

東莞市盛瑞科技有限公司  
Dongguan Shengrui Technology Co., Ltd.  
TEL: 86-769-8216714/87988875 MAIL: srco@qdsrco.com

機型 Model	-
各號 Customer P/N	-
盛瑞料號 Part No.	F-125F-xx-x-PP1-W6-Z-x
Environmental standard	RoHS
單位 Unit/mm	比例 Scale
Third angle projection	☉
頁碼 Page	1/1
核准 Approved	Tian 07/21/20
審核 Checked	鄭斌 07/21/20
安規 Safety	
製圖 Drawn	Tong 07/21/20

圖名 Description:  
ZIF FOR FFC/PPC PH  
1.25mm ASSY

E

D

C

B

A

1

2

3

4

5

6

7

E