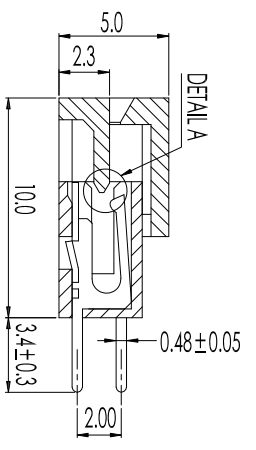
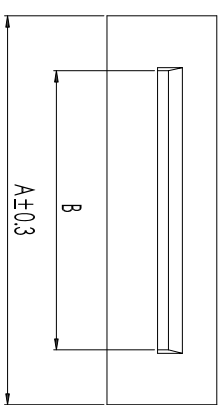
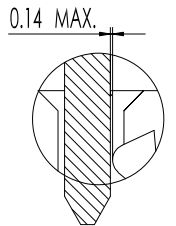


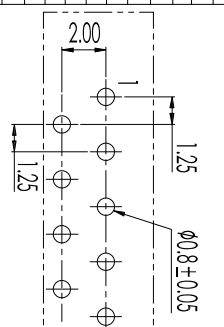
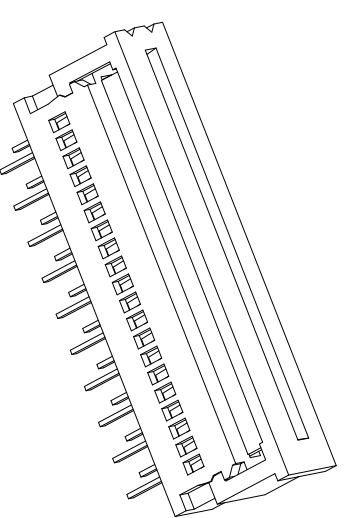
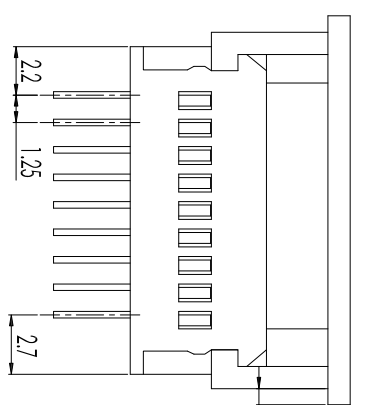
CCTS	PART NO	DM/A	DM/B
03	F-125A03-PPPT-VN-Z2	9.35	5.20
04	F-125A04-PPPT-VN-Z2	10.80	6.45
05	F-125A05-PPPT-VN-Z2	12.05	7.70
06	F-125A06-PPPT-VN-Z2	13.30	8.95
07	F-125A07-PPPT-VN-Z2	14.55	10.20
08	F-125A08-PPPT-VN-Z2	15.80	11.45
09	F-125A09-PPPT-VN-Z2	17.05	12.70
10	F-125A10-PPPT-VN-Z2	18.30	13.95
11	F-125A11-PPPT-VN-Z2	19.55	15.20
12	F-125A12-PPPT-VN-Z2	20.80	16.45
13	F-125A13-PPPT-VN-Z2	22.05	17.70
14	F-125A14-PPPT-VN-Z2	23.30	18.95
15	F-125A15-PPPT-VN-Z2	24.55	20.20
16	F-125A16-PPPT-VN-Z2	25.80	21.45
17	F-125A17-PPPT-VN-Z2	27.05	22.70
18	F-125A18-PPPT-VN-Z2	28.30	23.95
19	F-125A19-PPPT-VN-Z2	29.55	25.20
20	F-125A20-PPPT-VN-Z2	30.80	26.45
21	F-125A21-PPPT-VN-Z2	32.05	27.70
22	F-125A22-PPPT-VN-Z2	33.30	28.95
23	F-125A23-PPPT-VN-Z2	34.55	30.20
24	F-125A24-PPPT-VN-Z2	35.80	31.45
25	F-125A25-PPPT-VN-Z2	37.05	32.70
26	F-125A26-PPPT-VN-Z2	38.30	33.95
27	F-125A27-PPPT-VN-Z2	39.55	35.20
28	F-125A28-PPPT-VN-Z2	40.80	36.45
29	F-125A29-PPPT-VN-Z2	42.05	37.70
30	F-125A30-PPPT-VN-Z2	43.30	38.95
31	F-125A31-PPPT-VN-Z2	44.55	40.20
32	F-125A32-PPPT-VN-Z2	45.80	41.45



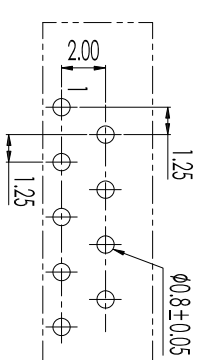
OPEN TYPE



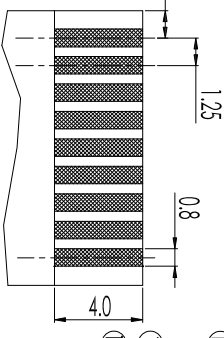
DETAIL A
CLOSE TYPE



RECOMMEND PCB LAYOUT
COMPONENT SIDE
(F-125AXXR-PTPT-VN-Z2)



RECOMMEND PCB LAYOUT
COMPONENT SIDE
(F-125AXXV-PTPT-VN-Z2)



FFC/PPC DIMENSION
THICKNESS 0.3±0.05mm

- NOTES:
1. Current Rating: 0.5A AC/DC
 2. Withstand Voltage: 250V AC/minute
 3. Working Temperature: -25° C to 85° C
 4. Insulation Resistance: 50MΩ Min.
 5. Contact Resistance: 30mΩ Max.
- F - 125 A xx x - PT P T - V N Z - 2
- ① ② ③ ④ ⑤ ⑥ ⑦ ⑧ ⑨ ⑩ ⑪ ⑫
 - ① F=FFC/PPC Connector Series
 - ② 125=Pitch 1.25mm
 - ③ A=A Type/B=B Type/C=C Type/D=D Type...
 - ④ XX=No. of Contacts
 - ⑤ B=Bottom Contact/I=Top Contact/R=Vertical Right Contact/Versa Needle P.C.B layout/V=Vertical Left Contact/Positive Needle P.C.B Layout/J/S=Single Contact/D=Dual Contact/N=Indiscriminate
 - ⑥ P=P=PT/66= Nylon 66/46= Nylon 46/6T= Nylon 6T/9T= Nylon 9T/LP=LP/PS= PPS/FR=Dupont FR50
 - ⑦ B=8/SS=P=Phosphor Bronze/H=High conductivity copper/R=Red Copper/C=Copper Alloy
 - ⑧ Plating/0=None/1=Tim Bright/N=Nickel Plating/G=Gold Flash Plating/I=Tim Matte/2=3U" Gold/3=5U" Gold/4=10U" Gold/5=15U" Gold/6=20U" Gold/7=15U" Gold/8=30U" Gold/S=Silver Plating/H=Half of Gold Tin
 - ⑨ V= Vertical Dip Type/R= Right Angle Dip Type/L=Vertical SMT Type/W=Right Angle SMT Type/S=Special P.C.B Model
 - ⑩ Insulator Height: 1=0.90mm/2=1.00mm/4=1.30mm/5=2.00mm/6=2.70mm/7=3.00mm/8=5.00mm/N=Indiscriminate
 - ⑪ Z=Z/ Type/N=Non-Z/ Type
 - ⑫ Packaging: 1=PE bag/2=Tube/3=Reel/4=Hot Tape Reel/5=Tape&Reel+CAR/6=Tape&Reel/PPE/7=PV/C Tray/8=Tube+CAR/9=Tube+PPT

Rev.	修正 Revisions
1	F-125K&S-PPPT-VN-Z2-X 2019.05.18

- Tolerances - Unless otherwise specified 公差	
XX : ±0.30	XX ^o : ±1°
XXX : ±0.25	XXX ^o : ±1°
XXXX : ±0.15	XXXX ^o : ±1°

模型 Model	客號 Customer P/N	審核 Checked	核准 Approved Tina	日期 Date
盛瑞科技 Part No.	-	安規 Safety	05/15/10	
Environmental standard	F-125AXX-PTPT-VN-Z2	製圖 Drawn	05/15/10	
ReHS		設計 Design	05/15/10	

東莞市盛瑞科技有限公司
Dongguan Shengrui Technology Co., Ltd.
TEL: 86-769-82167146/87988715 MAIL: srco@dsrco.com

THIS DRAWING CONTAINS INFORMATION THAT IS PROPRIETARY TO SHENGRUI INCORPORATED AND SHOULD NOT BE USED WITHOUT WRITTEN PERMISSION.

圖名 Description:
ZIF FOR FFC/PPC PH
1.25mm ASSY