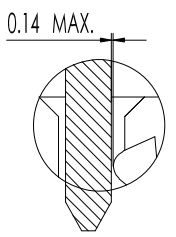
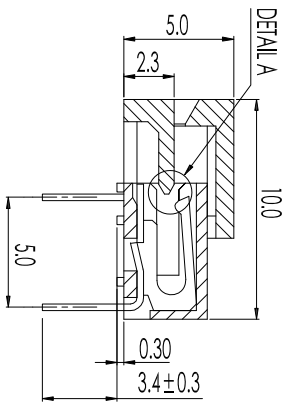
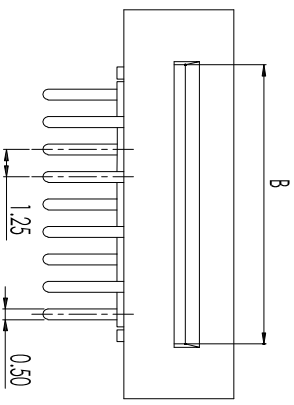
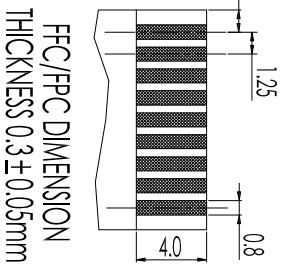
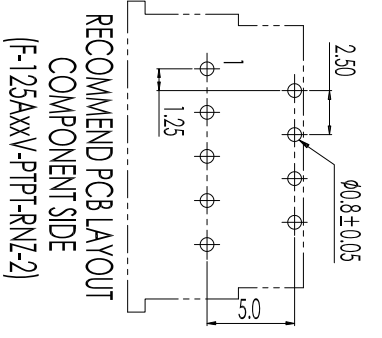
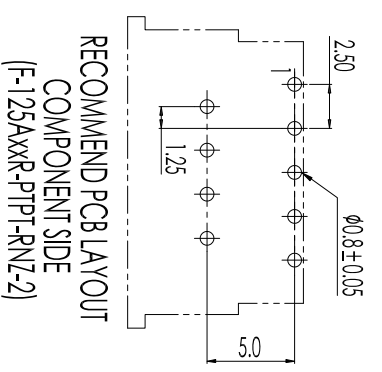
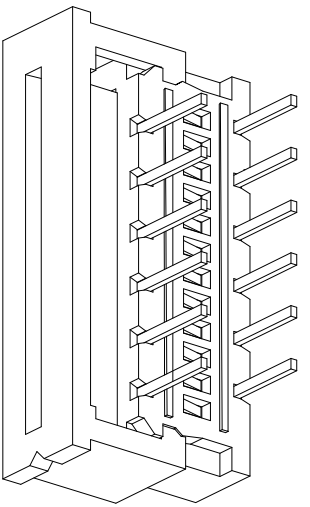
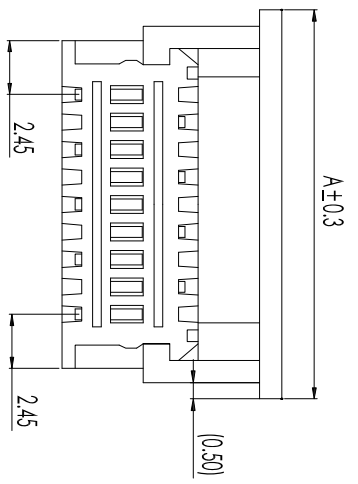


CITS	PART NO	DM/A	DM/B
03	F-125A03-PPPT-RN-Z2	9.35	5.20
04	F-125A04-PPPT-RN-Z2	10.80	6.45
05	F-125A05-PPPT-RN-Z2	12.05	7.70
06	F-125A06-PPPT-RN-Z2	13.30	8.95
07	F-125A07-PPPT-RN-Z2	14.55	10.20
08	F-125A08-PPPT-RN-Z2	15.80	11.45
09	F-125A09-PPPT-RN-Z2	17.05	12.70
10	F-125A10-PPPT-RN-Z2	18.30	13.95
11	F-125A11-PPPT-RN-Z2	19.55	15.20
12	F-125A12-PPPT-RN-Z2	20.80	16.45
13	F-125A13-PPPT-RN-Z2	22.05	17.70
14	F-125A14-PPPT-RN-Z2	23.30	18.95
15	F-125A15-PPPT-RN-Z2	24.55	20.20
16	F-125A16-PPPT-RN-Z2	25.80	21.45
17	F-125A17-PPPT-RN-Z2	27.05	22.70
18	F-125A18-PPPT-RN-Z2	28.30	23.95
19	F-125A19-PPPT-RN-Z2	29.55	25.20
20	F-125A20-PPPT-RN-Z2	30.80	26.45
21	F-125A21-PPPT-RN-Z2	32.05	27.70
22	F-125A22-PPPT-RN-Z2	33.30	28.95
23	F-125A23-PPPT-RN-Z2	34.55	30.20
24	F-125A24-PPPT-RN-Z2	35.80	31.45
25	F-125A25-PPPT-RN-Z2	37.05	32.70
26	F-125A26-PPPT-RN-Z2	38.30	33.95
27	F-125A27-PPPT-RN-Z2	39.55	35.20
28	F-125A28-PPPT-RN-Z2	40.80	36.45
29	F-125A29-PPPT-RN-Z2	42.05	37.70
30	F-125A30-PPPT-RN-Z2	43.30	38.95
31	F-125A31-PPPT-RN-Z2	44.55	40.20
32	F-125A32-PPPT-RN-Z2	45.80	41.45



OPEN TYPE

DETAIL A  
CLOSE TYPE



- NOTES:
1. Current Rating: 0.5A AC/DC
  2. Withstand Voltage: 250V AC/minute
  3. Working Temperature: -25° C to 85° C
  4. Insulation Resistance: 50MΩ Min.
  5. Contact Resistance: 30mΩ Max.

F - 125 A xx x - PT P T - R N Z - 2

- ① F=FFC/FPC Connector Series
- ② 125=Pitch 1.25mm
- ③ A=A Type/B=B Type/C=C Type/D=D Type...
- ④ XX=No. of Contacts
- ⑤ B=Bottom Contact/T=Top Contact/R=Vertical Right Contact/V=Vertical Left Contact/P=Positive Needle P.C.B Layout/S=Single Contact/D=Dual Contact/N=Indiscriminate
- ⑥ PT=BRT/6= Nylon 66/46= Nylon 46/6I= Nylon 6I/9T= Nylon 9T/LP=LCP/PS=PPS/FR=DuPont FR50
- ⑦ B=Brass/P=Phosphor Bronze/H=High conductivity copper/R=Red Copper/C=Copper Alloy
- ⑧ Plating:0=None/I=Tin Bright/N=Nickel Plating/G=Gold Flash Plating/l=Tin Matte/2=3u" Gold/3=5u" Gold/4=10u" Gold/5=15u" Gold/6=20u" Gold/7=15u" Gold/8=30u" Gold/S=Silver Plating/H=Half of Gold Tin
- ⑨ V=Vertical Dip Type/R= Right Angle Dip Type/l=Vertical SMT Type/V=Right Angle SMT Type/S=Special P.C.B Model
- ⑩ Insulator Height: 1=1.00mm/2=1.100mm/4=1.50mm/5=2.00mm/6=2.70mm/7=3.00mm/8=5.00mm/N=Indiscriminate
- ⑪ Z=ZIF Type/N=Non-ZIF Type
- ⑫ Pocktaging: l=PC boag/?=tuber/3=Reel/4=Hot Tape Reel/5=Tape&Reel/CAP/6=Tape&Reel/ET/7=PVC Tray/8=tube+CAP/9=tube+PET

Rev. 修正 Revisions  
1 F-125KxxS-PPPT-RN-Z2 x 2019.05.18

Tolerances -  
Unless otherwise specified  
公差



东莞市盛瑞科技有限公司  
Dongguan Shengrui Technology Co., Ltd.  
TEL: 86-769-8276714/6/87988875 MAIL: srco@dstsrco.com

模型 Model  
客號 Customer P/N  
盛瑞科技 Part No.  
Environmental standard  
單位 Unit:mm 比例 Scale

F-125Axx-PPPT-RN-Z2  
ReHS  
Third angle projection

核准 Approved Tina 05/15/10  
審核 Checked  
安規 Safety  
製圖 Draw 郑斌 05/15/10  
設計 Design Tong 05/15/10

圖名 Description:  
ZIF FOR FFC/FPC PH  
1.25mm ASSY

THIS DRAWING CONTAINS INFORMATION THAT IS PROPRIETARY TO SHENGRUI INCORPORATED AND SHOULD NOT BE USED WITHOUT WRITTEN PERMISSION.  
圖審 Page: 1/1

THIS DRAWING CONTAINS INFORMATION THAT IS PROPRIETARY TO SHENGRUI INCORPORATED AND SHOULD NOT BE USED WITHOUT WRITTEN PERMISSION.

THIS DRAWING CONTAINS INFORMATION THAT IS PROPRIETARY TO SHENGRUI INCORPORATED AND SHOULD NOT BE USED WITHOUT WRITTEN PERMISSION.