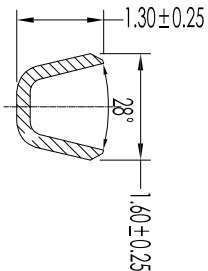
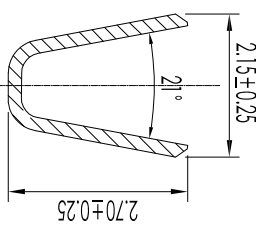


Section: C-C



Section: B-B



Section: A-A

- NOTES:
1. Current Rating: 20A AC/DC
 2. Voltage Rating: 250V AC/DC
 3. Temperature Range: -25° C to 85° C
 4. Contact Resistance: 10mΩ Max.
 5. Insulation Resistance: 30mΩ Max.
 6. Withstanding Voltage: 800V AC/minute
 7. Terminal Retention Force(In Housing): 1.5kgf Min.
 8. Terminal Insertion Force(Into Housing): 0.5kgf Max.

- A - 200 01 T 0 - P x - 3
- ① ② ③ ④ ⑤ ⑥ ⑦ ⑧
 - ① A=Board to Wire Connector
 - ② 200=Pitch 2.0mm
 - ③ 01=01(PH) Type Series
 - ④ C=C-Connector/H: Housing/T=Terminal
 - ⑤ 0=Standard Type/2=2# Type(16/8)/3=3# Type(16/5)/4=4# Type(15/7)/M=Male Type/F=Female Type
 - ⑥ B=Brass/P=Phosphor Bronze/H=High Conductivity Copper/R=Red copper
 - ⑦ T=Tin Plating /G=Gold flash Plating / 1=3U" Gold Plating / 2=5U" Gold Plating / 3=10U" Gold Plating / 4=15U" Gold Plating / 5=20U" Gold Plating / 6=30U" Gold Plating / 7=Nickel Plating / \$=Silver plating
 - ⑧ 3=Iope&Reel Packing

Item	Parts Material	Specification	Qty	Note	P/N
①	Terminal	Phosphor Bronze Underplate: 15U" Nickel Whole Tin: 50U" / AWG#24 - #28 / Insulation O.D.: 1.4mm Max.	12,000 PCS	A20001-T-201	

Rev.	修正 Revisions
A.01	A2001-101-HM Tony 2019/05/16
A.02	变更料号 Tony 2020/07/21

- Tolerances - Unless otherwise specified	
公差	公差
公差	公差
公差	公差
公差	公差
公差	公差
公差	公差
公差	公差

SRCO 东莞市盛瑞科技有限公司
Dongguan Shengrui Technology Co., Ltd.
TEL: 86-769-82167146/87988875 MAIL: srco@qdsrco.com

模型 Model	规格 Customer P/N	盛瑞料号 Part No.	环境标准 Environmental standard	ReHS
-	-	A-20001T0-Px-3	RoHS	Third angle projection

核准 Approved	日期 Date	审核 Checked	日期 Date	安规 Safety	制图 Drawn	日期 Date	页码 Page
Tina	05/15/17	郑昊	07/21/20		Tong	07/21/20	1/1

Pitch 2.00mm Pitch Crimp Terminal