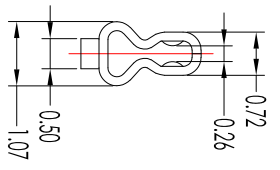


- NOTES:
1. Current Rating: 1.0A AC/DC
  2. Voltage Rating: 250V AC/DC
  3. Temperature Range: -25° C to 85° C
  4. Contact Resistance: 20mΩ Max.
  5. Insulation Resistance: 30mΩ Max.
  6. Withstanding Voltage: 500V AC/minute
  7. Applicable Wire: AWG #32 to AWG #26
- A - 150 02 T 0 - P x - 3
- ① A=Board to Wire Connector
  - ② 150=Pitch 1.50 mm
  - ③ 02=02(MX) Type Series
  - ④ C=Connector/H. Housing/I=Terminal
  - ⑤ 0=Standard Type/M=Male Type/F=Female Type
  - ⑥ B=Brass/P=Phosphor Bronze/H=High Conductivity Copper/R=Red copper
  - ⑦ T=Tin Plating/G=Gold Flash Plating/N=Nickel Plating/I=Tin Matte/2=3U" Gold/3=5U" Gold/4=6U" Gold/5=10U" Gold/7=20U" Gold/8=30U" Gold/S=Silver Plating/H=Half of Gold Tin
  - ⑧ 3=Tap&Reel Packing



Item	Parts Material	Specification	Qty	Note
②	Terminal	Phosphor Bronze / Gold-Plated / AWG#24-#28 / Insulation O.D. 1.10mm Max.	10,000 PCS	A1500270-PG-3
①	Terminal	Phosphor Bronze / Tin-Plated 100-200u" over Nickel-plated 30-100u" / AWG#24-#28 / Insulation O.D. 1.10mm Max.	10,000 PCS	A1500270-PT-3

**SRCO** 东莞市盛瑞科技有限公司  
Dongguan Shengrui Technology Co., Ltd.

TEL: 86-769-8216714/87988875 MAIL: srco@dsrco.com

修正 Revisions

Rev.	修正 Revisions	Tony	2015/07/15
A.01	MX150SY-TE-IP	Tony	2020/07/21
B.01	变更料号	Tony	2020/07/21

Unless otherwise specified

- Tolerances -  
公差

XXXX: ±0.15 200-800: ±0.10  
XX: ±0.20 2-200: ±0.15  
X: ±0.25 1-499: ±0.20  
X°: ±2°

THIS DRAWING CONTAINS INFORMATION THAT IS PROPRIETARY TO SHENGRUI TECHNOLOGY CO., LTD. AND SHOULD NOT BE REPRODUCED OR USED WITHOUT WRITTEN PERMISSION.

機型 Model	客號 Customer P/N	盛瑞料號 Part No.	審核 Checked	日期 Date
-	-	A-1500270-Px-3	安規 Safety	05/13/20

Environmental standard: RoHS

Third angle projection

單位 Unit:mm	比例 Scale	頁碼 Page	頁碼 Page
1/1	1/1	1/1	1/1

核准 Approved: Tian 07/21/20

審核 Checked: 鄭晨 05/13/20

製圖 Drawn: Tong 05/13/20

圖名 Description: Terminal  
Pitch: 1.50mm(MX) Cimp Style

1 2 3 4 5 6 7