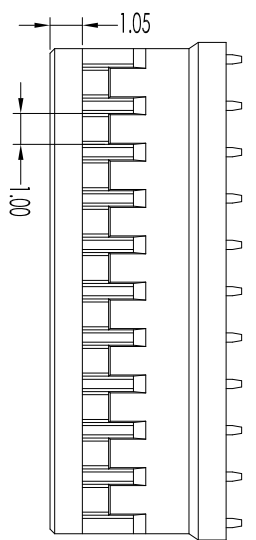
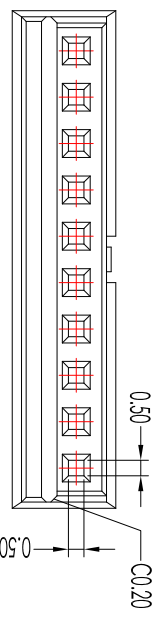
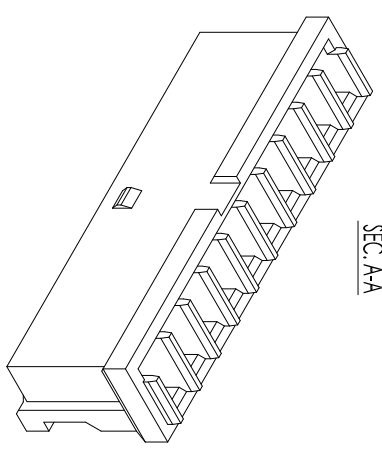
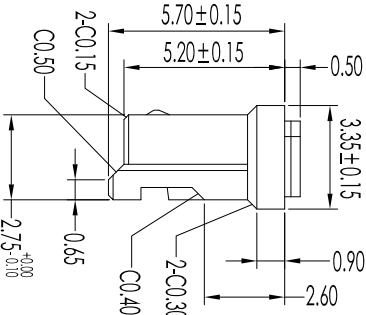
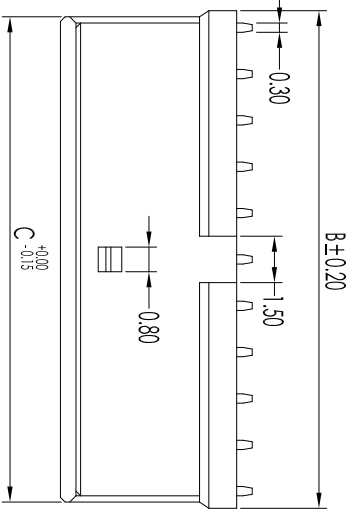
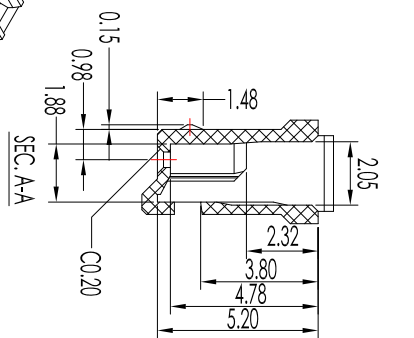
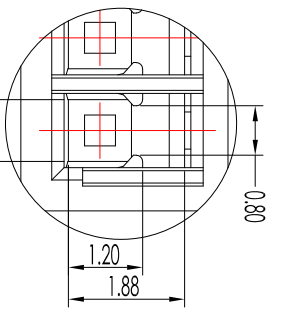
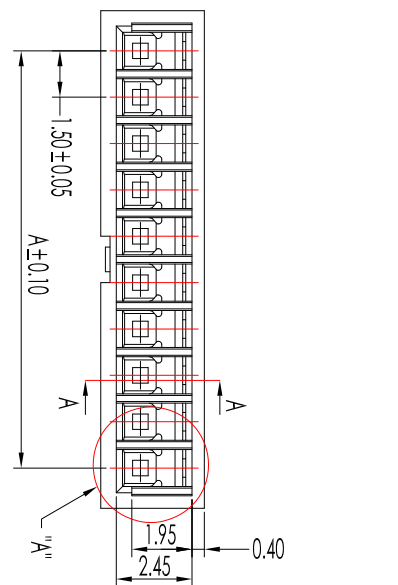


| CRS | DM A | DM B | DM C |
|-----|-------|-------|-------|
| 02 | 1.50 | 4.10 | 3.70 |
| 03 | 3.00 | 5.60 | 5.20 |
| 04 | 4.50 | 7.10 | 6.70 |
| 05 | 6.00 | 8.60 | 8.20 |
| 06 | 7.50 | 10.10 | 9.70 |
| 07 | 9.00 | 11.60 | 10.20 |
| 08 | 10.50 | 13.10 | 12.70 |
| 09 | 12.00 | 14.60 | 14.20 |
| 10 | 13.50 | 16.10 | 15.70 |
| 11 | 15.00 | 17.60 | 17.20 |
| 12 | 16.50 | 19.10 | 18.70 |
| 13 | 18.00 | 20.60 | 20.20 |
| 14 | 19.50 | 22.10 | 21.70 |
| 15 | 21.00 | 3.60 | 23.30 |



- NOTES:
1. Current Rating: 1.0A AC/DC
 2. Voltage Rating: 50V AC/DC
 3. Temperature Range: -25° C to 85° C
 4. Contact Resistance: 20mΩ Max.
 5. Insulator Resistance: 500MΩ min.
 6. Withstanding Voltage: 500V AC/minute

- A - 150 02 H xx S - 66 - 0 - 1
- ① ② ③④ ⑤⑥ ⑦ ⑧ ⑨
- ① A=Board to Wire Connector
 - ② 150=Pitch 1.50mm
 - ③ 02=02(MMX) Type Series
 - ④ C=Connector/H=Housing/T=Terminal
 - ⑤ xx=No. of Contacts
 - ⑥ 0=Standard/M= Male/F=Female
 - ⑦ S=Single Row Type/D= Dual Row Type
 - ⑧ PT=PT/66= Nylon 66/46= Nylon 46/ 6T= Nylon 6T/9T= Nylon 9T/LP= LCP/PS=PPS
 - ⑧ 0=General(通常一般物)/M=Male type/F=Female Type
 - ⑨ 1=PE Bag Packing

| Item | Parts Material | Specification | Qty | Note | P/N |
|------|----------------|--------------------------------|-----|------|---------------|
| ① | Insulator | Nylon 66/UL94V-2/ Color: White | ✕ | | A15002-HSG-66 |

SRCO 东莞市盛瑞科技有限公司
Dongguan Shengrui Technology Co., Ltd.

TEL: 86-769-8216714/879888775 MAIL: srco@dsrco.com

Model: A-15002-HSG-66-0-1
Customer P/N: -
Part No: -
RoHS: -

| Rev. | 修正/Revisions | Tony | 2009/07/15 |
|------|---------------|------|------------|
| A.01 | A1501WR-SL-XP | Tony | 2020/07/21 |
| B.01 | 变更料号 | Tony | 2020/07/21 |

Unless otherwise specified

公差: XX: ±0.25 D: ±0.15
XXX: ±0.15 200-800: ±0.10
X: ±0.05 800-490: ±0.20
X: ±0.20 L: ±0.40

THIS DRAWING CONTAINS INFORMATION THAT IS PROPRIETARY TO SHENGRUI TECHNOLOGY CO., LTD. AND SHOULD NOT BE USED WITHOUT WRITTEN PERMISSION.

Environmental standard: RoHS
Third angle projection

Approved: 07/21/20
Checked: 05/13/20
Safety: Tong
Date: 05/13/20