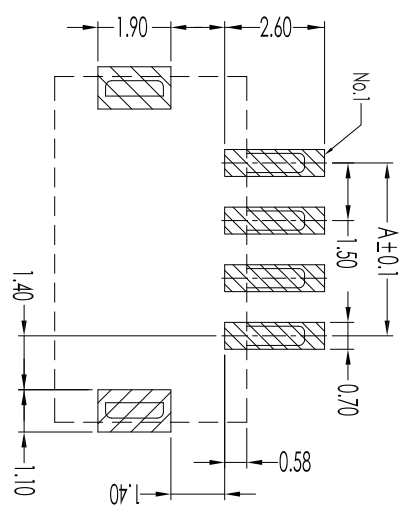
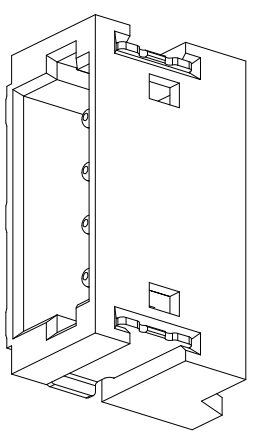
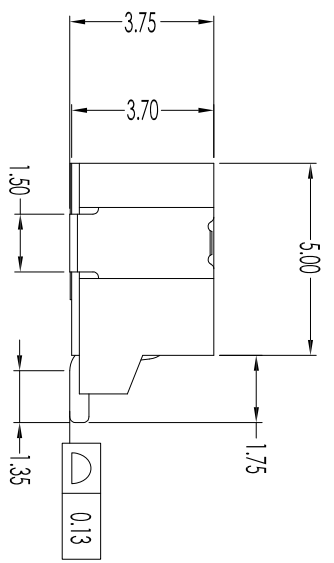
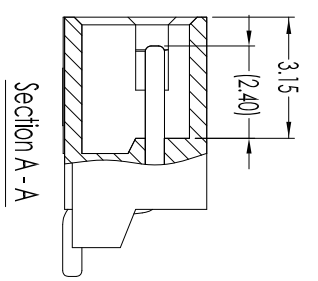
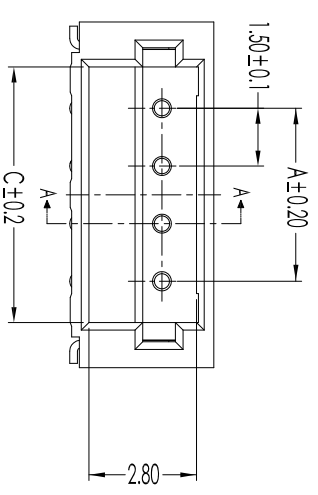
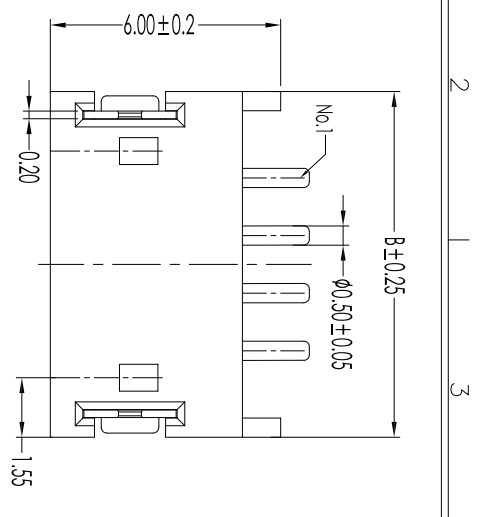


CCT5	DMA	DMB	DMC
02	1.50	6.00	3.65
03	3.00	7.50	5.15
04	4.50	9.00	6.65
05	6.00	10.50	8.15
06	7.50	12.00	9.65
07	9.00	13.50	11.15
08	10.50	15.00	12.65
09	12.00	16.50	14.15
10	13.50	18.00	15.65
11	15.00	19.50	17.15
12	16.50	21.00	18.65
13	18.00	22.50	20.15
14	19.50	24.00	21.65
15	21.00	25.50	23.15
16	22.50	27.00	24.65
17	24.00	28.50	26.15
18	25.50	30.00	27.65
19	27.00	31.50	29.15
20	28.50	33.00	30.65



Recommended P.C.B layout  
[PCB Board Tolerance ± 0.05]

Item	Parts Material	Specification	Qty	Note	P/N
③	Solder Tab	Boss C2680/ Tin 100U" Min. over Ni 50U" Min.	×		A15001-TSAB-106
②	Pin Material	Boss C2680/ Tin 100U" Min. over Ni 50U" Min.	×		A15001-TPN-105
①	Insulator	Nylon/PC J1194V-D/ Color: Natural	×		A15001-CHRS-105

- NOTES:
- Current Rating: 1.0A AC/DC
  - Voltage Rating: 100V AC/DC
  - Temperature Range: -25° C to 85° C
  - Contact Resistance: 40mΩ max.
  - Insulation Resistance: 500mΩ min.
  - Withstanding Voltage: 500V AC/minute.
  - Pin Retention Force: 10N Min.
- A - 150 01 C xx S - xx B x - W H - x
- ① A=Board to Wire Connector  
② 150=Pitch 1.50mm  
③ 01=ZH 1.50mm Type Series  
④ C=Connector/H=Housing/T=Terminal  
⑤ XX=No. of Contacts  
⑥ S=Single Row/D=Dual Row/A=Assembly  
⑦ PT=PBT/66= Nylon 66/46= Nylon 46/  
⑧ 6T= Nylon 6T/9T= Nylon 9T/LP=LCP/PS=PSS  
⑧ C=Copper Alloy/B=Boss/P=Phosphor Bronze/H=High conductivity copper  
⑨ Plating 0=None/1=Tin Bright/3=Gold Flash Plating/1=1m Matte  
⑨ 2=3u" Gold/3=5u" Gold/4=10u" Gold/5=15u" Gold/6=20u" Gold/  
7=30u" Gold/8=Nickel Plating/9=Silver Plating/H=Hole of Gold Tin  
⑩ V=Vertical Dip Type/R=Right Angle Dip Type/L=Vertical SMT Type/W=Right Angle SMT Type/S=Special P.C.B Model  
⑪ H=Model H Type  
⑫ Packaging: 1=PE bag/2=tube/3=tape reel/4=PC Tray/  
8=tube+CAP

修正 Revisions  
Unless otherwise specified



东莞市盛瑞科技有限公司  
Dongguan Shengrui Technology Co., Ltd.

TEL: 86-769-8276714/87988875  
MAIL: srco@dsrco.com

公差	公差
±0.25	±0.25
±0.5	±0.5
±1.0	±1.0
±2.0	±2.0
±3.0	±3.0
±4.0	±4.0
±5.0	±5.0
±6.0	±6.0
±7.0	±7.0
±8.0	±8.0
±9.0	±9.0
±10	±10

THIS DRAWING CONTAINS INFORMATION THAT IS PROPRIETARY TO SHENGRUI TECHNOLOGY CO., LTD. AND SHOULD NOT BE USED WITHOUT WRITTEN PERMISSION.

核准	Approved	Tina	05/15/21	圖名 Description:
審核	Checked	鄭良	05/13/20	Pitch 1.50mm ZH Climp Style
安規	Safety	製圖	05/13/20	Right Angle SMT Connector
頁碼	Page	1/1		