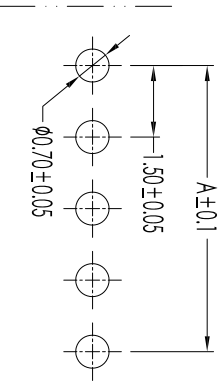
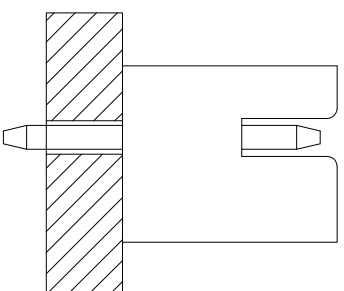
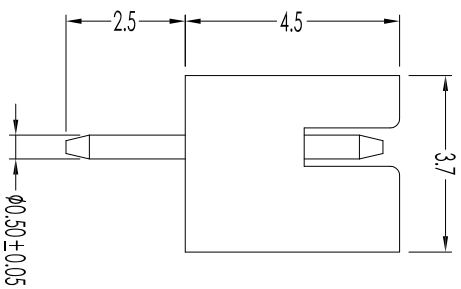
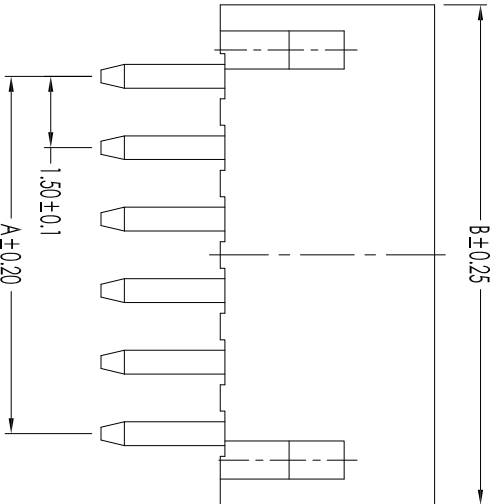
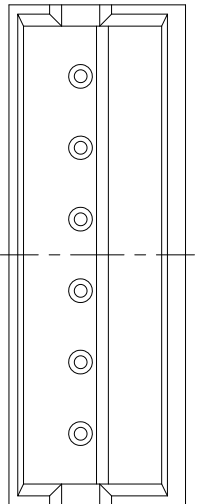


CCTS	DM/A	DM/B
02	1.50	4.50
03	3.00	4.00
04	4.50	7.50
05	6.00	9.00
06	7.50	10.50
07	9.00	12.00
08	10.50	13.50
09	12.00	15.00
10	13.50	16.50
11	15.00	18.00
12	16.50	19.50
13	18.00	21.00
14	19.50	22.50
15	21.00	24.00
16	22.50	25.50



Recommended P.C.B. Layout
(PCB Board Tolerance ±0.05)

修正 Revisions

Tolerances -
Unless otherwise specified



东莞市盛瑞科技有限公司
Dongguan Shengrui Technology Co., Ltd.

TEL: 86-769-8276714/6/87988875 MAIL: srco@qdsrco.com

THIS DRAWING CONTAINS INFORMATION THAT IS PROPRIETARY TO SHENGRUI TECHNOLOGY CO., LTD. AND SHOULD NOT BE REPRODUCED OR USED WITHOUT WRITTEN PERMISSION.

Item	Parts Material	Specification	Qty	Note	P/N
②	PIN Material Boss C2480/ Tin 100U" Min. over Ni 50U" Min.		×		A15001-TIN-105
①	Insulator Nylon/CP J1194V-0/ Color: Natural		×		A15001-CHRS-105

- NOTES:
- Current Rating: 1.0A AC/DC
 - Voltage Rating: 50V AC/DC
 - Temperature Range: -25° C to 85° C
 - Contact Resistance: 40mΩ max.
 - Insulation Resistance: 1000mΩ min.
 - Withstanding Voltage: 500V AC/minute.
 - Pin Retention Force: 10N Min.
- A - 150 01 C xx S - xx B x - V J - x
 ① ② ③ ④ ⑤ ⑥ ⑦ ⑧ ⑨ ⑩ ⑪ ⑫
- A=Board to Wire Connector
 - 150=Pitch 1.50mm
 - 01=ZH 1.50mm Type Series
 - C=Connector/H=Housing/T=Terminal
 - XX= No. of Contacts
 - S=Single Row/D=Dual Row/A=Assembly
 - PT=PBT/66= Nylon 66/46= Nylon 46/
6T= Nylon 6T/9T= Nylon 9T/LP=LCP/PS=PSS
C=Copper Alloy/B=Brass/P=Phosphor Bronze/H=High conductivity copper
 - Plating 0=None/1=Tin Bright/G=Gold Flash Plating/I=10m Matte
/2=3u" Gold/3=5u" Gold/4=10u" Gold/5=15u" Gold/6=20u" Gold/
7=30u" Gold/8=Nickel Plating/9=Silver Plating/H=Hole of Gold Tin
 - V=Vertical Dip Type/R=Right Angle Dip Type/L=Vertical SMT Type/W=Right Angle SMT Type/S=Special P.C.B. Model
 - J=Model J Type
 - Packaging: 1=PE bag/2=tube/3=tape reel/4=PVC Tray/
8=tube+CAP

機型 Model

客號 Customer P/N

盛瑞科技 Part No.

Environmental standard
ROHS

單位 Unit MM 比例 Scale

Third angle projection

核准 Approved Tina

審核 Checked 鄭良

安規 Safety

製圖 Drawn Tong

頁碼 Page 1/1

圖名 Description:

Pitch 1.50mm ZH Climp Style

Vertical DIP Connector